

RE.0444 NV (New Version)

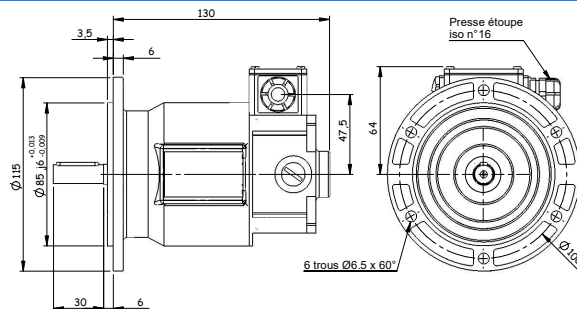
Direct Current Tachometer generator



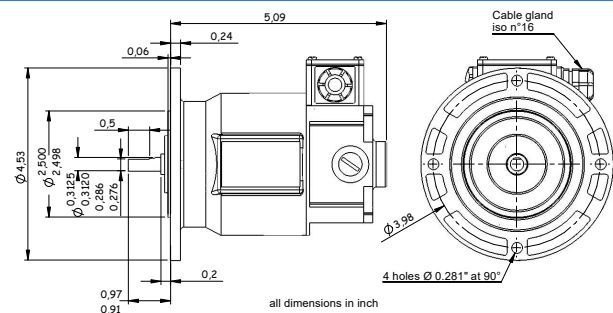
- Application :**
- Industry
 - Speed control & regulation

- Description :**
- Magnetic circuit intended for standard industrial applications
 - Flange mounting only
 - Available with temperature compensation

RE.0444 NV – B5 flange



RE.0444 NV – US flange



MAIN CHARACTERISTICS

DESIGNATION	SYMB	VALUE
Max. speed	n_m	12 000 rpm
Moment of inertia	J	0.95 Kg cm ²
No-load driving torque	M_r	1.5 N.cm
Max. radial shaft stress	F	0.4 ($\varnothing 7$) / 1.0 ($\varnothing 11$) da N
Maximum E.M.F.	E_m	300 V
Maximum linearity error	ΔE	$\leq 0.15 \% E_T$
Overall ripple rate (peak to peak)	ΔE_c	$\leq 0.5 \% E_c$
Rotation harmonics (f=2 p.n)	ΔE_p	$\leq 0.2 \% E_c$
Slots harmonics (f=Z.n.)	ΔE_z	$\leq 0.3 \% E_c$
Calibration precision	ΔE_o	+ 1 % E_{T_o}
E.M.F. temperature drift		
Not compensated	ΔE_c	0.02 %/°C
Compensated		0.005 %/°C
Time constant	C_t	2.5 ms
*Filter: Time constant		0.47 ms
Load current		5 mA
Speed		3 000 rpm

CONSTRUCTION DETAILS

Insulation class	B (IEC 34-1)
Operating temperature	-30 / +130 °C
Climatic protection	C _a (IEC 68-1)
Ingress protection	IP44 (IEC 34-5)
Direction of rotation	reversible
Excitation: Permanent magnets	SmCo

Net weight	1.8 kg
-------------------	---------------

MECHANICAL OPTIONS

Shaft ends and bearings

	MOUNTING SIDE				OPPOSITE MOUNTING SIDE	
	D (mm)	L (mm)	F (mm)	GA (mm)	Bearings	Bearings
RE.0444 NV standard	11	30	4	12.5	12 x 28 x 8 ZZ	8 x 22 x 7 ZZ
RE.0444 NV	7	30	2	8	12 x 28 x 8 ZZ	8 x 22 x 7 ZZ
RE.0444 NV – US version					12 x 28 x 8 ZZ	8 x 22 x 7 ZZ



Markings and polarity of terminals (cables) for counter-clockwise rotation, seen from the shaft

A1 : +
A2 : -

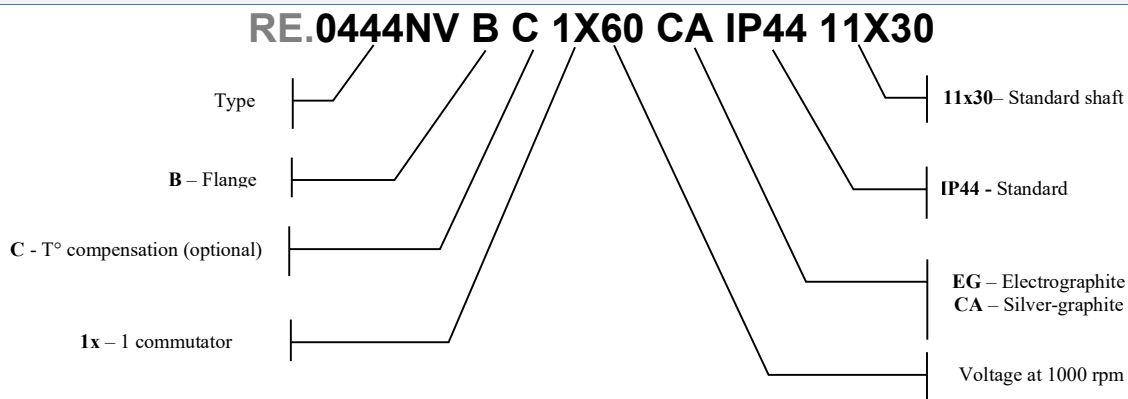
ELECTRICAL OPTIONS

DESCRIPTION	SYMB	UNIT	VALUES				
			Min.	20	50	60	Max.
Voltage at 1 000 rpm	E_n	V	20	40	50	60	100
Voltage gradient	C _v	V / rpm	0.02	0.04	0.05	0.06	0.10
Armature resistance	R _a	Ω	12	45	70	100	280
Max thermal load	I _{th}	A	0.55	0.25	0.22	0.18	0.11
Max. Allowed speed	n _a	rpm	12 000	7 500	6 000	5 000	3 000

BRUSHES

GRADE	CODE	DOMAINE D'UTILISATION	DIMENSIONS	NUMBER
Silver-graphite	/0001397	300 V max	3,1 x 4,1 x 10 mm	4

PRODUCT DESCRIPTION



When inquiring, please advise the serial number of the tachogenerator to be replaced.

Main Item / Part Number for RE.0444NV



OUR CODE		OUR PRODUCT DESCRIPTION	Types	Mounting Type	Charac. at 1000 rpm	Comp.	Brush	IP	Shaft
RE.0444 NV 1x60V									
		RE.0 444 NV STANDARD 1x60 V							STANDARD
0000176	RE.0	444NV B 1X60 CA IP44 7X30	RE.0444 NV1	B > Flange	60 V		CA	44	7x30
0000175	RE.0	444NV B 1X60 CA IP44 11X30	RE.0444 NV1	B > Flange	60 V		CA	44	11x30