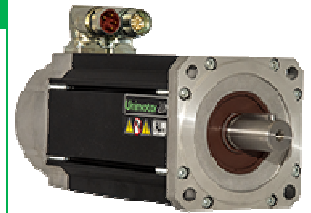


SERVO MOTOR 115UDB306BAECA



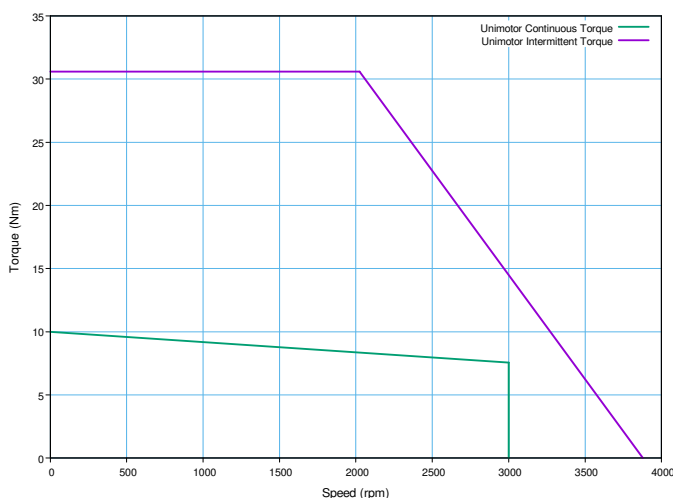
Definition

Type	Unimotor HD	
Frame Size (mm)	115	
Voltage	U	U - 400V
Magnet type	D	D - High dynamic
Frame Length	B	
Speed (min-1)	30	3000
Brake	6	Braked (6)
Connection type	B	B - Power and Signal 90° rotatable
Output shaft	A	
Feedback device code	EC	EC - Inductive EnDat SinCos Multi-Turn (EQI 1331)
Inertia & thermistor	A	
PCD	130	130 (FF 130 / 110)
Shaft Diameter	240	24j6 x 50,0 .
Fan box	-	
Classe d'isolation	F	
UL Motor / UL Stator	UL Motor / UL Stator	

Nominal characteristics

Motor Ambient Temperature (°C)	40	Drive Fsw (kHz)	12	
Motor Stall Torque (N.m)	10,20	Stall Current (A)	6,38	
Rated Torque (N.m)	7,70	Rated Current (A)	4,81	
Motor Peak Torque (N.m)	30,60	Peak Current for Drive Selection (A)	19,12	
Rated Power (kW)	2,42	Kt (Nm/A)	1,60	
Winding Thermal Time Constant (s)	164	Ke (V/kmin-1)	98,00	
Number of Poles	10	R (ph-ph) (Ohm)	1,90	
Maximum Cogging (N.m)	0.15	L (ph-ph) (mH)	18,00	
Inertia (kg.cm ²)	4,92	Peso del prodotto	9,56	
Ingress Protection Level (IP)	IP65			
Brake	Braked (6)		Static Torque (N.m)	16,0
Release Time (ms)	64	Backlash (°)	0,38	
Brake Supply Voltage (V)	24	Brake Coil Power (W)	17,5	

Torque / speed graph

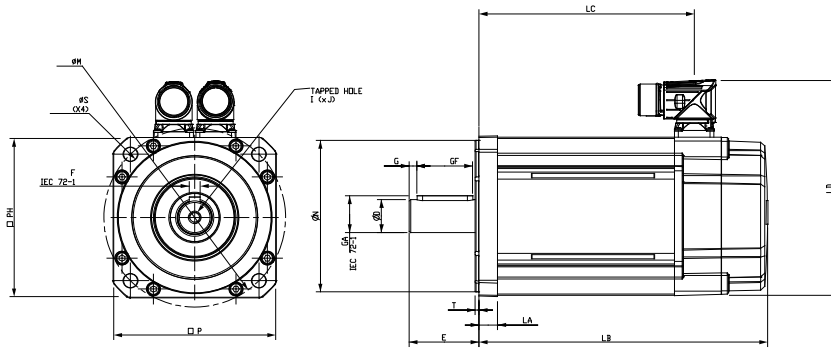


Configured characteristics

Motor Ambient Temperature (°C)	40
Drive Fsw (kHz)	8
Derating Factor	0,98
Stall Torque with Derating Factor (N.m)	10,00
Nominal Torque after Derating (N.m)	7,55
Peak Torque with Derating Factor (N.m)	30,60

SERVO MOTOR 115UDB306BAECA - Unimotor HD 115UDB306BAECA

Motor (° & mm)



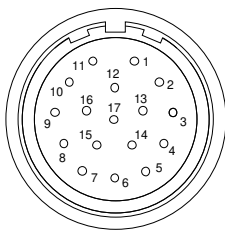
LB	Total length	230,80
LB1		
LC	Power connector position	191,00
LJ		
LA	Flange thickness	13,2
T	Register Length	2,7
N	Register Diameter	110,0
LD	Power connector overall height	156,50
LD1		
P	Flange Square	116,0
S	Fixing Hole Diameter	10,0
M	Fixing hole PCD	130
PH	Motor Housing Width	115
D	Shaft Diameter	24j6
E	Shaft Length	50,0
GA	Key Height	27,0
GF	Key Length	40,0
G	Key to Shaft End	5,3
F	Key Width	8
I	Tapped Hole Thread Size	M8x1,25
J	Tapped Hole Depth	20,0
	Mounting Bolt	M8

Motor electrical interface

Feedback device code : EC - Inductive EnDat SinCos Multi-Turn (EQI 1331)

Connection type :
Section des fils :

B - Power and Signal 90° rotatable
4G1 + 2x 0.5



- | | |
|------------|-------------|
| 1 - CTP | 10 - COS |
| 2 - CTP | 11 - DATA |
| 3 - Screen | 12 - DATA / |
| - | 13 - COS / |
| - | 14 - SIN |
| - | 15 - SIN / |
| - | 16 - Power |
| 8 - CLK | 17 - 0V |
| 9 - CLK / | Screen |

- U - Phase U
V - Phase V
W - Phase W
Screen

- B+ Brake +
B- Brake -

