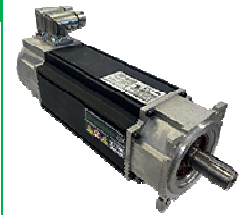


SERVO MOTOR 095E3E306BBECA100190



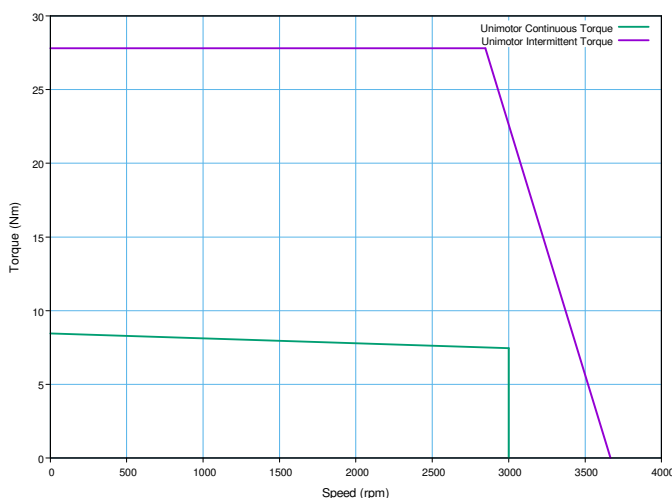
Definition

Type	Unimotor FM	
Frame Size (mm)	095	
Voltage	E	E - 220V
Magnet type	3	3 - Standard
Frame Length	E	
Speed (min-1)	30	3000
Brake	6	Braked (6)
Connection type	B	B - Power and Signal 90° rotatable
Output shaft	B	No Key
Feedback device code	EC	EC - Inductive EnDat SinCos Multi-Turn (EQI 1331)
Inertia & thermistor	A	A - Standard
PCD	100	100 (FF 100 / 80)
Shaft Diameter	190	19j6 x 40,0 .
Fan box	-	
Classe d'isolation	F	
UL Motor / UL Stator	UL Motor / UL Stator	

Nominal characteristics

Motor Ambient Temperature (°C)	40	Drive Fsw (kHz)	12	
Motor Stall Torque (N.m)	9,30	Stall Current (A)	10,00	
Rated Torque (N.m)	8,20	Rated Current (A)	8,8	
Motor Peak Torque (N.m)	27,80	Peak Current for Drive Selection (A)	29,89	
Rated Power (kW)	2,56	Kt (Nm/A)	0,93	
Winding Thermal Time Constant (s)	112	Ke (V/kmin-1)	57,00	
Number of Poles	6	R (ph-ph) (Ohm)	0,86	
Maximum Cogging (N.m)	0,28	L (ph-ph) (mH)	4,35	
Inertia (kg.cm <sup>2</sup> )	6,15	Peso del prodotto	11,38	
Ingress Protection Level (IP)	IP65			
Brake	Braked (6)		Static Torque (N.m)	10,0
Release Time (ms)	64	Backlash (°)	1,25	
Brake Supply Voltage (V)	24	Brake Coil Power (W)	18,0	

Torque / speed graph

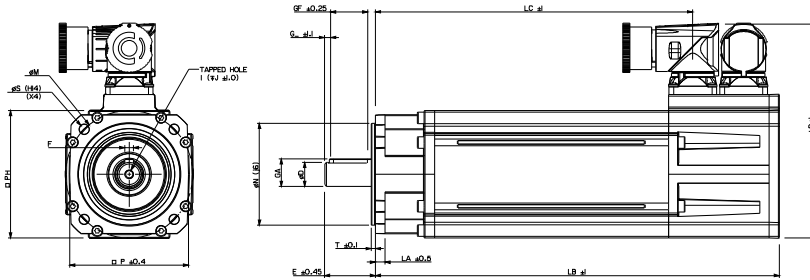


Configured characteristics

Motor Ambient Temperature (°C)	40
Drive Fsw (kHz)	8
Derating Factor	0,91
Stall Torque with Derating Factor (N.m)	8,46
Nominal Torque after Derating (N.m)	7,46
Peak Torque with Derating Factor (N.m)	27,80

**SERVO MOTOR 095E3E306BBECA100190 - Unimotor FM 095E3E306BBECA100190**

**Motor (° & mm)**



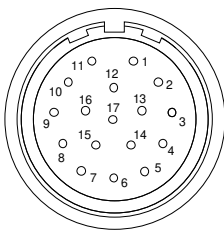
LB	Total length	376,90
LB1		
LC	Power connector position	325,90
LJ		
LA	Flange thickness	5,9
T	Register Length	2,8
N	Register Diameter	80,0
LD	Power connector overall height	141,50
LD1		
P	Flange Square	90,0
S	Fixing Hole Diameter	7,0
M	Fixing hole PCD	100
PH	Motor Housing Width	95
D	Shaft Diameter	19j6
E	Shaft Length	40,0
GA	Key Height	0,0
GF	Key Length	0,0
G	Key to Shaft End	0,0
F	Key Width	-
I	Tapped Hole Thread Size	M6x1
J	Tapped Hole Depth	17,0
	Mounting Bolt	M6

**Motor electrical interface**

Feedback device code : EC - Inductive EnDat SinCos Multi-Turn (EQI 1331)

Connection type :  
Section des fils :

B - Power and Signal 90° rotatable  
4G1 + 2x 0.5



- |            |             |
|------------|-------------|
| 1 - CTP    | 10 - COS    |
| 2 - CTP    | 11 - DATA   |
| 3 - Screen | 12 - DATA / |
| -          | 13 - COS /  |
| -          | 14 - SIN    |
| -          | 15 - SIN /  |
| -          | 16 - Power  |
| 8 - CLK    | 17 - 0V     |
| 9 - CLK /  | Screen      |

- U - Phase U  
V - Phase V  
W - Phase W  
Screen

- B+ Brake +  
B- Brake -

