

SERVO MOTOR 250J3E150HACAA300480



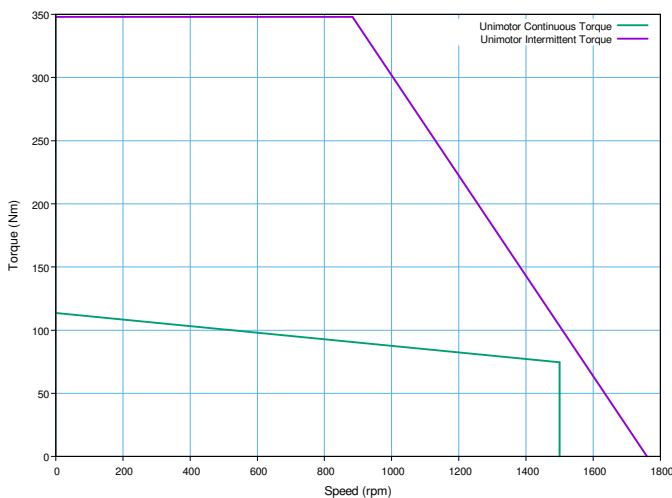
Definition

Type	Unimotor FM	
Frame Size (mm)	250	
Voltage	U	U - 400V
Magnet type	3	3 - Standard
Frame Length	E	
Speed (min-1)	15	1500
Brake	0	Unbraked (0)
Connection type	H	H - Power hybrid box and Signal 90°
Output shaft	A	Key
Feedback device code	CA	CA - 4096 ppr Incremental encoder (CFS50)
Inertia & thermistor	A	A - Standard
PCD	300	300 (FF 300 / 250)
Shaft Diameter	480	48k6 x 110,0 .
Fan box	-	
Classe d'isolation	F	
UL Motor / UL Stator	- / -	

Nominal characteristics

Motor Ambient Temperature (°C)	40	Drive Fsw (kHz)	12
Motor Stall Torque (N.m)	116,00	Stall Current (A)	32,50
Rated Torque (N.m)	76,00	Rated Current (A)	21,1
Motor Peak Torque (N.m)	348,00	Peak Current for Drive Selection (A)	96,67
Rated Power (kW)	11,94	Kt (Nm/A)	3,60
Winding Thermal Time Constant (s)	486	Ke (V/kmin-1)	216,00
Number of Poles	10	R (ph-ph) (Ohm)	0,21
Maximum Cogging (N.m)	-	L (ph-ph) (mH)	8,60
Inertia (kg.cm ²)	337,00	Peso del prodotto	69,92
Ingress Protection Level (IP)	IP65		

Torque / speed graph

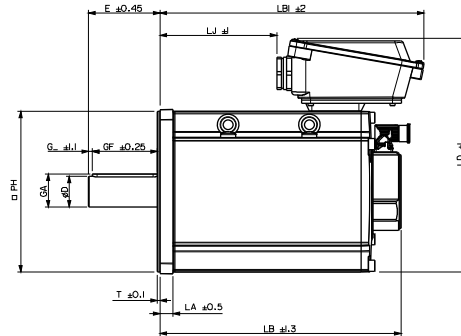
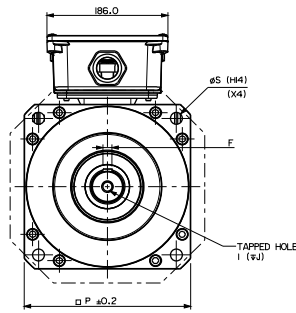


Configured characteristics

Motor Ambient Temperature (°C)	40
Drive Fsw (kHz)	8
Derating Factor	0,98
Stall Torque with Derating Factor (N.m)	113,68
Nominal Torque after Derating (N.m)	74,48
Peak Torque with Derating Factor (N.m)	348,00

SERVO MOTOR 250U3E150HACAA300480 - Unimotor FM 250U3E150HACAA300480

Motor (° & mm)



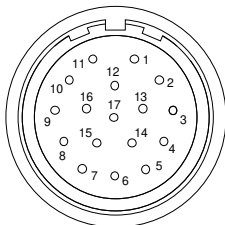
LB	Total length	400,70
LB1		
LC	Power connector position	303,70
LJ		
LA	Flange thickness	20,0
T	Register Length	4,5
N	Register Diameter	250,0
LD	Power connector overall height	363,50
LD1		
P	Flange Square	256,0
S	Fixing Hole Diameter	18,5
M	Fixing hole PCD	300
PH	Motor Housing Width	250
D	Shaft Diameter	48k6
E	Shaft Length	110,0
GA	Key Height	51,5
GF	Key Length	100,0
G	Key to Shaft End	6,0
F	Key Width	14
I	Tapped Hole Thread Size	M16x2
J	Tapped Hole Depth	37,0
	Mounting Bolt	M16

Motor electrical interface

Feedback device code : CA - 4096 ppr Incremental encoder (CFS50)

Connection type :
Section des fils :

H - Power hybrid box and Signal 90°
4G10



- | | |
|----------|--------------|
| 1 - CTP | 10 - A |
| 2 - CTP | 11 - Index |
| 3 - | 12 - Index / |
| 4 - S1 | 13 - A / |
| 5 - S1 / | 14 - B |
| 6 - S2 | 15 - B / |
| 7 - S2 / | 16 - Power |
| 8 - S3 | 17 - 0V |
| 9 - S3 / | Screen |

- U - Phase U
V - Phase V
W - Phase W
Screen

- B+ Brake +
B- Brake -

