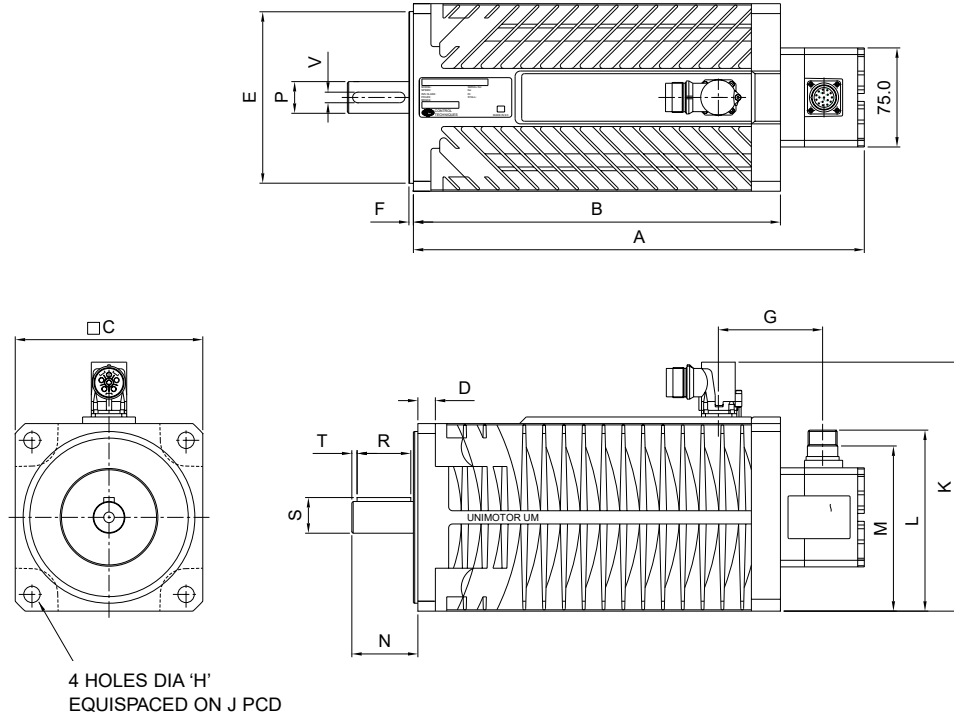


## Dimensions (mm) Frame size 75-142

Note: Dimension A,B,M,L and K are shown at the maximum.



## Dimensions - Frame Sizes 75-142

FRAME SIZE	75				95					115					142				
Dimension / Length suffix	A	B	C	D	A	B	C	D	E	A	B	C	D	E	A	B	C	D	E
A Length Overall (Unbraked)	211	241	271	301	222	252	282	312	342	242	272	302	332	362	225	255	285	315	345
A Length Overall (Braked)	241	271	301	331	252	282	312	342	372	272	302	332	362	392	285	315	345	375	405
B Body Length (Unbraked)	146	176	206	236	157	187	217	247	277	177	207	237	267	297	190	190	220	250	280
B Body Length (Braked)	176	206	236	266	187	217	247	277	307	207	237	267	297	327	220	250	280	310	340
C Flange Square	75.0				95.0					115.0					142.0				
D Flange Thickness	7.0				9.0					11.0					12.3				
E Register Diameter	60.0 (J6)				80.0 (J6)					95.0 (J6)					130.0 (J6)				
F Register Length	2.4				2.9					2.9					3.4				
G Power to Connect C/L	61.0				62.5					66.0					80.0				
H Fixing Holes Diameter	5.8 (H14)				7.0 (H14)					10.0 (H14)					12.0 (H14)				
J Fixing Hole p.c.d.	75.0				100.0					115.0					165.0				
K Overall Height	126.0				146.0					166.0					193.0				
L Signal Connector Height (UM)	107.0				117.0					127.0					140.0				
M Signal Connector Height (SL)	88.0				98.0					108.0					121.0				
N Shaft Length (front)	23.0	30.0	30.0	30.0	30.0	40.0	40.0	40.0	40.0	40.0	40.0	40.0	50.0	50.0	50.0	50.0	50.0	50.0	50.0
P Shaft Diameter (front)	11.0	14.0	14.0	14.0	14.0	19.0	19.0	19.0	19.0	19.0	19.0	19.0	24.0	24.0	24.0	24.0	24.0	24.0	24.0

### Shaft Key Dimensions (option A)

R Key Length	14.0	22.0	22.0	22.0	22.0	32.0	32.0	32.0	32.0	32.0	32.0	32.0	40.0	40.0	40.0	40.0	40.0	40.0	40.0
S Key Height	12.4	15.9	15.9	15.9	15.9	21.4	21.4	21.4	21.4	21.4	21.4	21.4	26.9	26.9	26.9	26.9	26.9	26.9	26.9
T Key to Shaft End	3.5	3.0	3.0	3.0	3.0	3.0	3.0	3.0	3.0	3.0	3.0	3.0	4.0	4.0	4.0	4.0	4.0	4.0	4.0
V Key Width	4.0	5.0	5.0	5.0	5.0	6.0	6.0	6.0	6.0	6.0	6.0	6.0	8.0	8.0	8.0	8.0	8.0	8.0	8.0